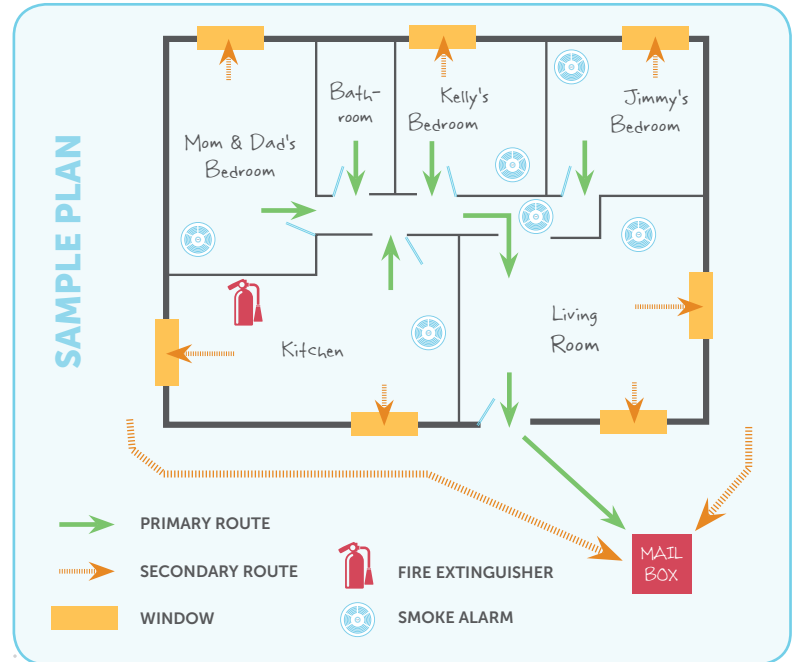


FIRE ESCAPE PLAN

Use this grid to draw the floor plan of your home & plot your fire escape routes.

Include the following on your map:

- Windows and doors
- Bedrooms/sleeping areas
- Smoke alarms
- Fire extinguisher(s)
- Two different exit routes from each room
- Meeting location (located a safe distance from your house)



PRACTICE YOUR PLAN AT LEAST TWICE A YEAR.



To file a claim:

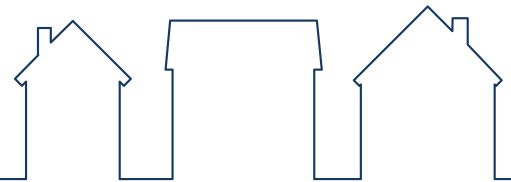
- 1** File a claim online at **floridafamily.com** or call 888.486.4663. Claims Representatives are available 24 hours a day to assist you.
- 2** Make any temporary repairs necessary to protect your home and property from further damage, such as general cleanup, placing a tarp over roof damage to prevent leaks, etc. Make sure to save the receipts for anything you purchase.
- 3** Take photos of anything that may need to be disposed of prior to your Adjuster's visit.
- 4** In the event your home is uninhabitable, contact a member of our Claims Department for an explanation of your policy's living expense allowance.

Record your policy information so it is easily accessible:

Policy number:

Agency:

Agency phone:



Other important websites and phone numbers:

Home Maintenance & Loss Prevention Tips: FloridaFamily.com/resources

Pre- & Post-Disaster Support: FEMA.gov

Emergency & Natural Disaster Prep Resources: Ready.gov

Information resource on fire, electrical, and related hazards: NFPA.org

.....

.....

.....

.....

.....

CONTACT US

BONITA SPRINGS OFFICE
27599 Riverview Center Blvd., Suite 100
Bonita Springs, FL 34134
Mail to: P.O. Box 136001
Bonita Springs, FL 34136

JACKSONVILLE OFFICE
1301 Riverplace Blvd., Suite 1700
Jacksonville, FL 32207



FloridaFamily.com | 888.486.4663